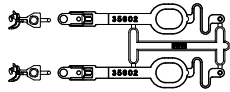


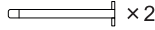
■ **Included Parts**



Trip Pin

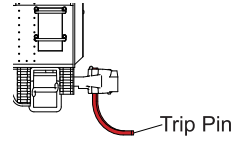


KATO Kinematic Coupler



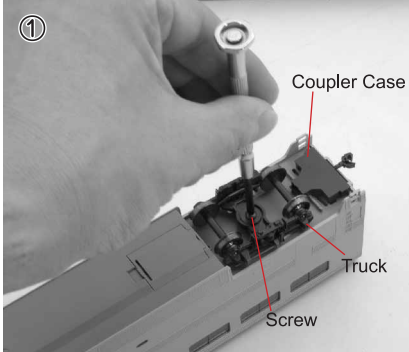
Power pick up plate  
for the Optional Lighting Kit  
(Coach)

■ **Installation of Magnetic Trip Pins in Coupler**

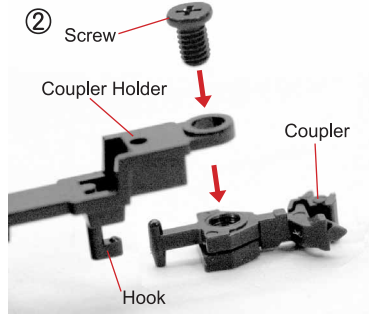


■ **How to replace with KATO Kinematic Coupler**

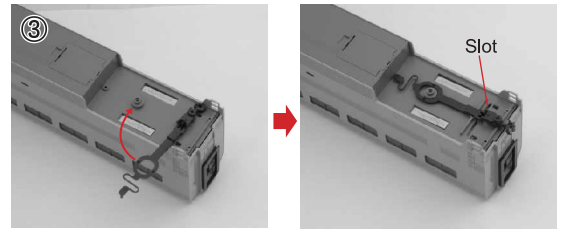
KATO Kinematic Coupler creates prototypical close coupling. When using this coupler, coupling and uncoupling is manual operation.



Detach Trucks from the floor part by removing screws. Also, detach Coupler Cases by pulling from the floor part.



Attach the Coupler to the Coupler Holder with included screw.

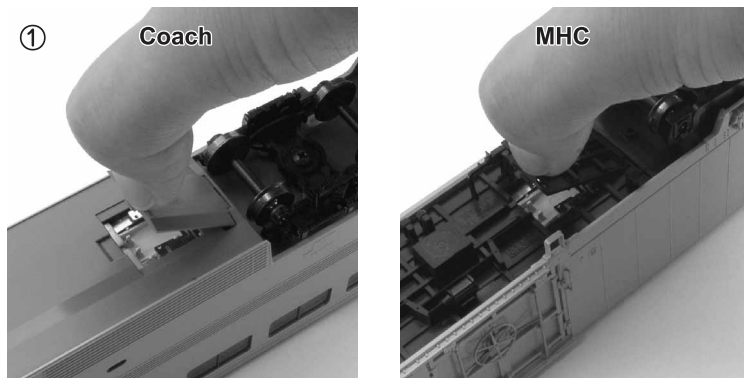


Insert the hook on the assembled coupler to the slot under the floor part, and turn the coupler as on the photo. Then reassemble the truck.

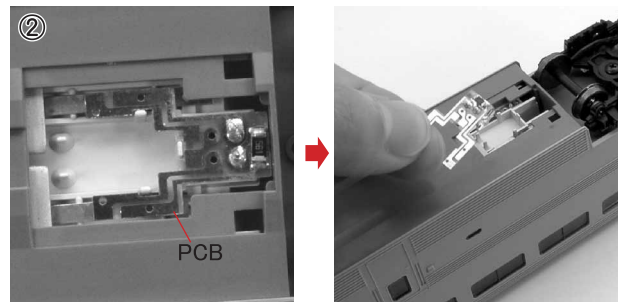
■ **Taillight PCB**

The Taillight PCB is mounted on one end of Coach. To illuminate the taillight in other positions, remove the PCB and change to other positions on Coach or MHC-2.

● **How to change the PCB position**

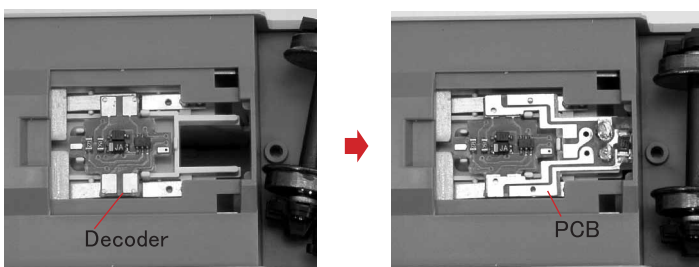


Remove the cover from the floor as shown in the photo.



Remove the PCB and put in another position as in the photo, and replace the cover.

● **How to install the optional DCC Decoder FL12**



When installing the FL12, remove the cover and PCB as above instructions, and install the decoder as in the left photo. Then put the PCB on decoder, and replace the cover.